

# Daily Mobility Patterns in Power Wheelchair Users:

What complexity measures can be  
used to describe mobility patterns?

Sharon Sonenblum, ScM



# Introduction

- Technology improvements
  - Wireless technologies
  - Increased memory
  - Low power consumption and longer battery lives
- Data collection with increased sampling rates and increased time period
- More robust, commercial products available for activity monitoring (pedometers, accelerometer based activity monitors, wheelchair odometers, etc)
- Research environment shifting from lab to community
- New Questions
  - How much data is good enough?
  - How do we analyze all of this data?



# Why measure “mobility” in the community?

- Assessing outcomes of medical interventions designed to optimize mobility or physical activity
  - Laboratory and controlled environments do not reflect the complex environments people need to navigate
  - Improved gait doesn't necessarily mean improved mobility!



# Complexity Background

Some amount of complexity is important for a healthy system whose behavior is modulated by many different inputs.

- Too much complexity may lead to instability
- Too little complexity implies a decreased adaptability of the system

## *Different Measures of Complexity*

- Variability (standard deviation and coefficient of variation)
  - Increased variability distinguishes amateur from trained athletes
  - Decreased variability distinguishes unhealthy gait
- Fractals: scalable self-similarity
  - Common in nature: trees, clouds, coast lines
  - Biology: termite tunneling and narwhal migration
  - Physiology: heart beat, gait
- Entropy



# Complexity Background

- Some amount of complexity is important for a healthy system whose behavior is modulated by many different inputs.
  - Too much complexity may lead to instability
  - Too little complexity implies a decreased adaptability of the system

## *Different Measures of Complexity*

- Variability (standard deviation and coefficient of variation)
  - Increased variability distinguishes amateur from trained athletes
  - Decreased variability distinguishes unhealthy gait
- Fractals: scalable self-similarity
  - Common in nature: trees, clouds, coast lines
  - Biology: termite tunneling and whale migration
  - Physiology: heart beat, gait
- **Entropy**



# Complexity Background: Entropy

- Measure of uncertainty or variability
  - Thermodynamics
  - Information Theory
  - Physiology
- Approximate Entropy (ApEn: Pincus, 1991)
  - Describes the predictability or regularity of a time series
  - “Measures the logarithmic probability that a series of data points a certain distance apart will exhibit similar relative characteristics on the next incremental comparison”



# Complexity Background: Entropy

- $ApEn(m,r)$
- $m$  = embedded dimension, number of consecutive components to compare,  $m=2$
- $r$  = similarity threshold,  $r = 0.2 * stdev$
- Low entropy (near 0) = highly periodic, predictable
- High entropy (near 2) = unpredictable, random



# Examples of Entropy in Physiology

- Growth hormone secretion:
  - Increased entropy for subjects with tumors
- Heart rate
  - Decreasing entropy for 2 hours prior to atrial fibrillation
- Gait
  - Children with Down syndrome have increased entropy in segmental angular displacements compared to children with typical development



# Research Questions

- Does daily mobility show complex patterns similar to those shown in simple gait?
- Can ApEn be used to compare the complexity of mobility between subjects?
- Can ApEn be used to compare the complexity of mobility of a single subject before and after an intervention?
- What is the appropriate way to apply the ApEn analysis?
  - Best sampling rate or *epoch* of the data



# Research Questions

- Does daily mobility show complex patterns similar to those shown in simple gait?
- Can ApEn be used to compare the complexity of mobility between subjects?
- Can ApEn be used to compare the complexity of mobility of a single subject before and after an intervention?
- What is the appropriate way to apply the ApEn analysis?
  - Best sampling rate or *epoch* of the data



# Study Population:

Going from an upright wheelchair to a Tilt-in-Space wheelchair



# Overview of the Power Wheelchair Study

- Subjects
  - Currently using a power upright wheelchair
  - Prescribed a power tilt-in-space wheelchair
  - Any disability, so far subjects have had: MS, SCI, MD
- Instrument with occupancy sensor, wheel odometer, and position sensor
  - 2 weeks before acquisition of new chair
  - 2 weeks 3 months after arrival of new chair
- Collect number of wheel revolutions every 2 seconds (similar to counting number of steps)



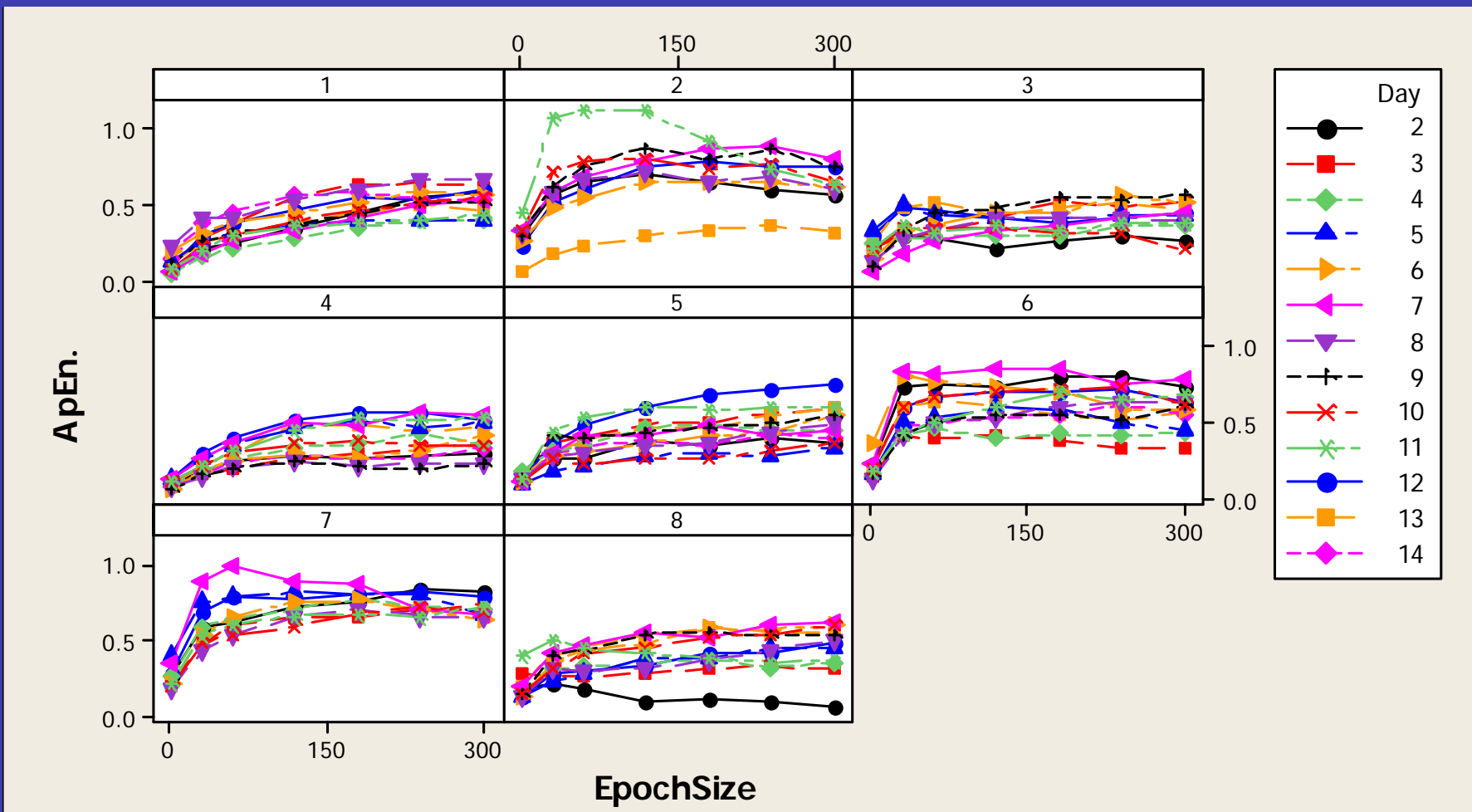
# Expectations Based on Epoch Size

- With **increased epoch size**,
  - more averaging of data
  - **entropy should decrease**
- With **decreasing epoch size**,
  - more zero-count epochs which are inherently predictable,
  - **entropy should decrease**

-----

- Which effect dominates ApEn analysis?
- Is ApEn too sensitive to Epoch size to use for analysis?

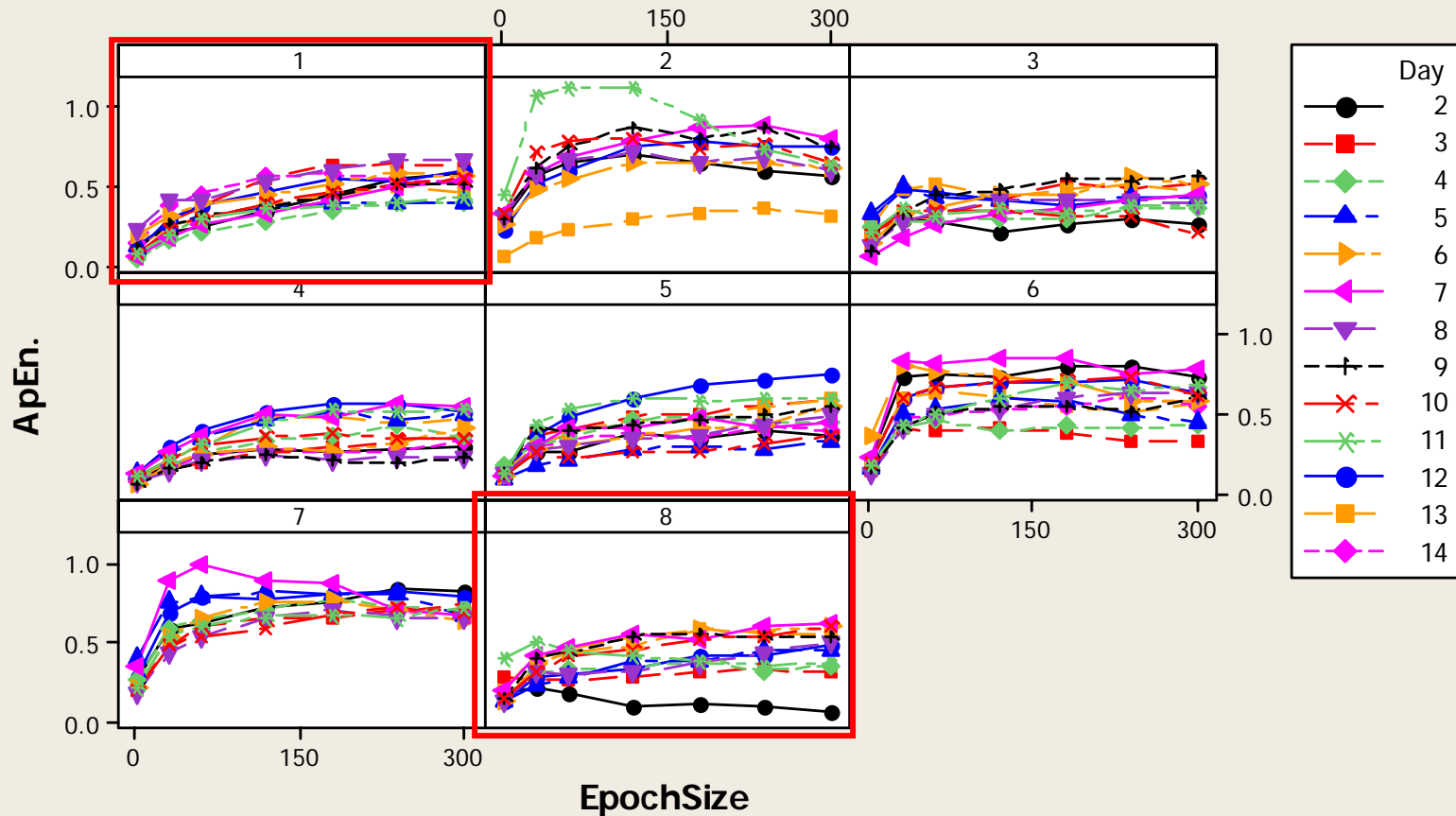




For most subjects, ApEn INCREASES with increasing epoch size...

- Influence of zero-count epochs dominates
- Increases with different slopes for different subjects
- Some subjects and days do NOT increase

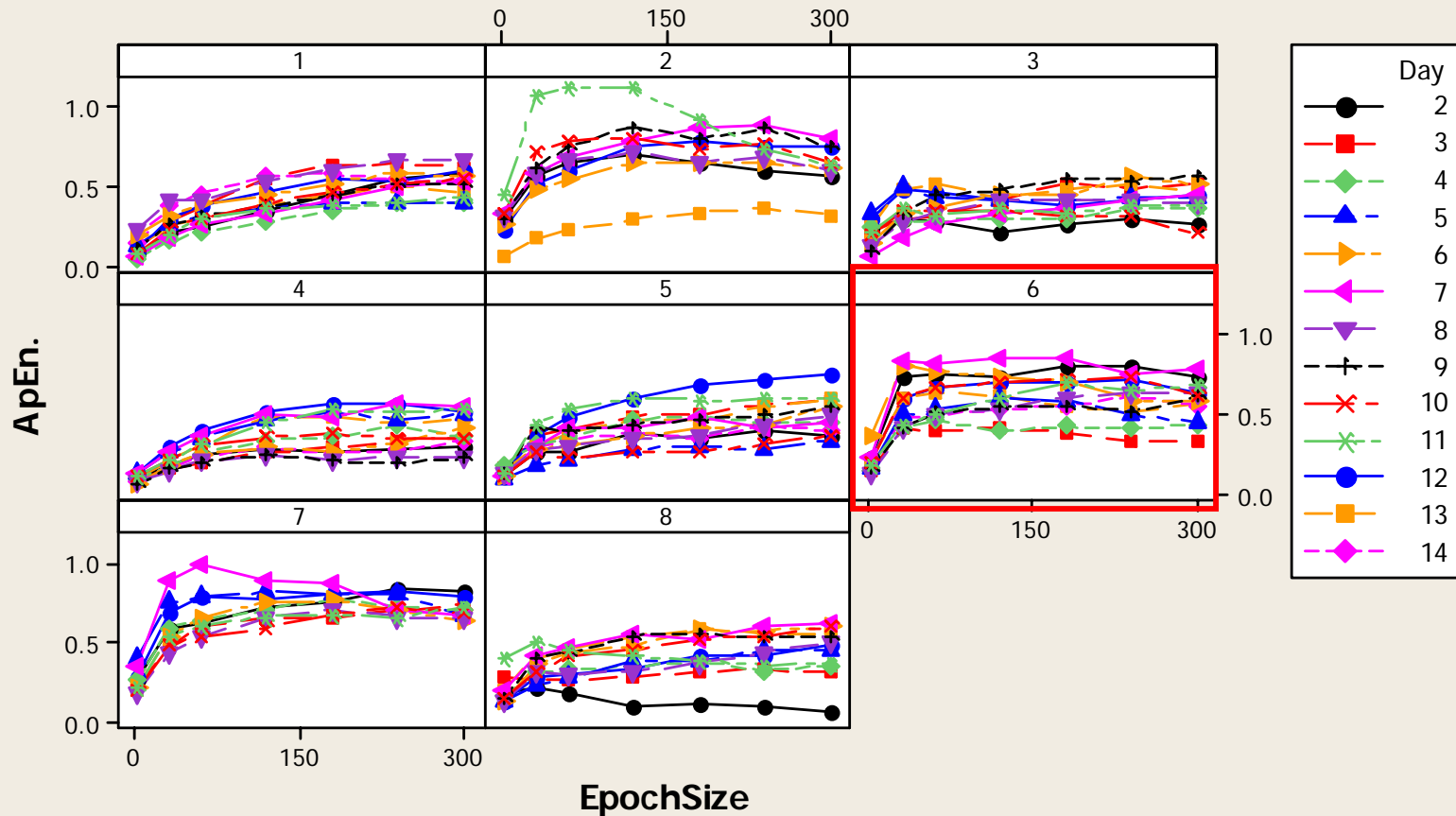
## Scatterplot of ApEn. vs EpochSize



For most subjects, ApEn INCREASES with increasing epoch size...

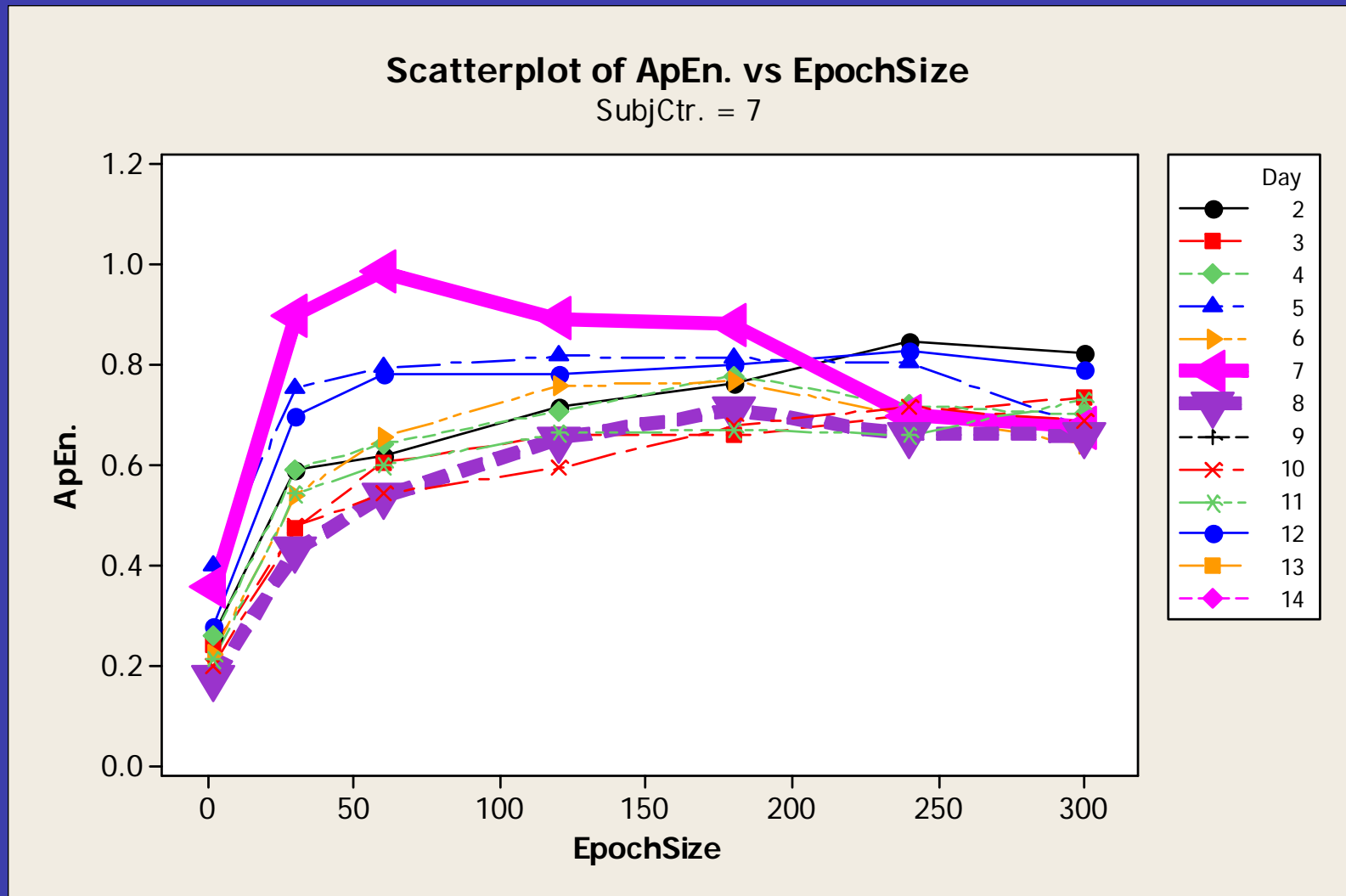
- Influence of zero-count epochs dominates
- **Increases with different slopes for different subjects**
- Some subjects and days do NOT increase

## Scatterplot of ApEn. vs EpochSize



For most subjects, ApEn INCREASES with increasing epoch size...

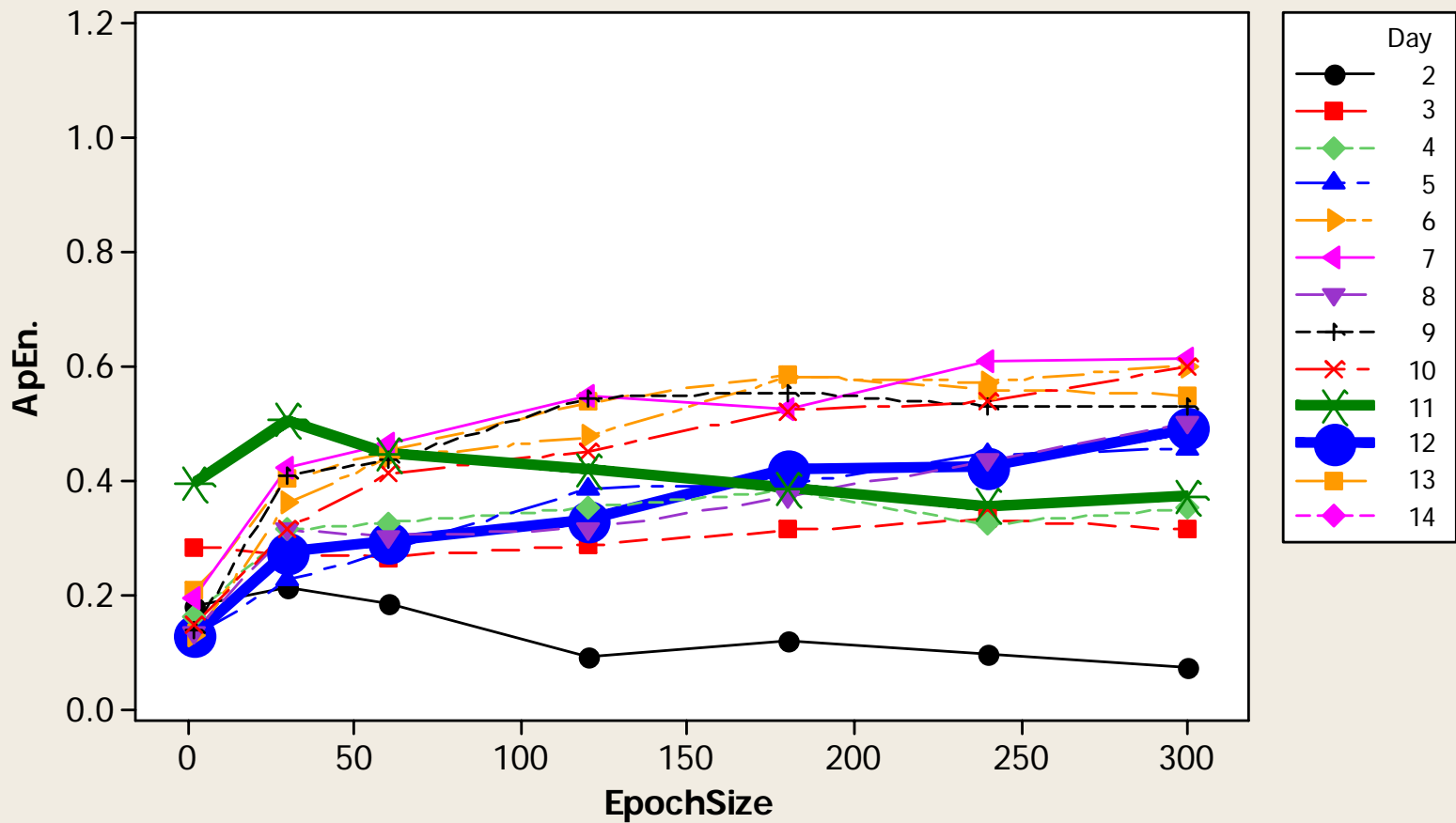
- Influence of zero-count epochs dominates
- Increases with different slopes for different subjects
- **Some subjects and days do NOT increase**



At 30 second and 1 minute epochs, the difference in entropy between days 7 and 8 is much greater than at epochs of 4-5 minutes, where the entropy is nearly identical

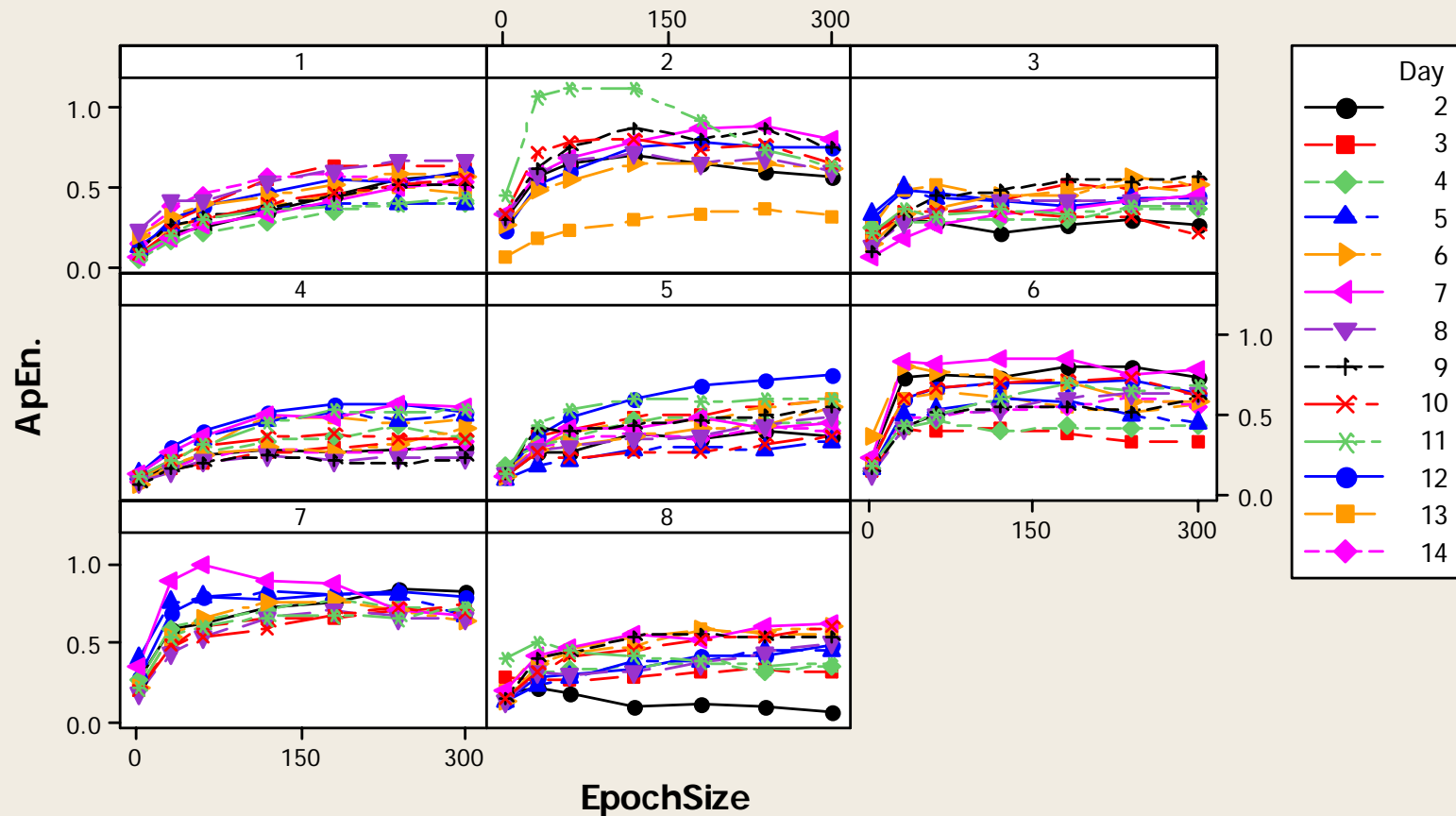
## Scatterplot of ApEn. vs EpochSize

SubjCtr. = 8



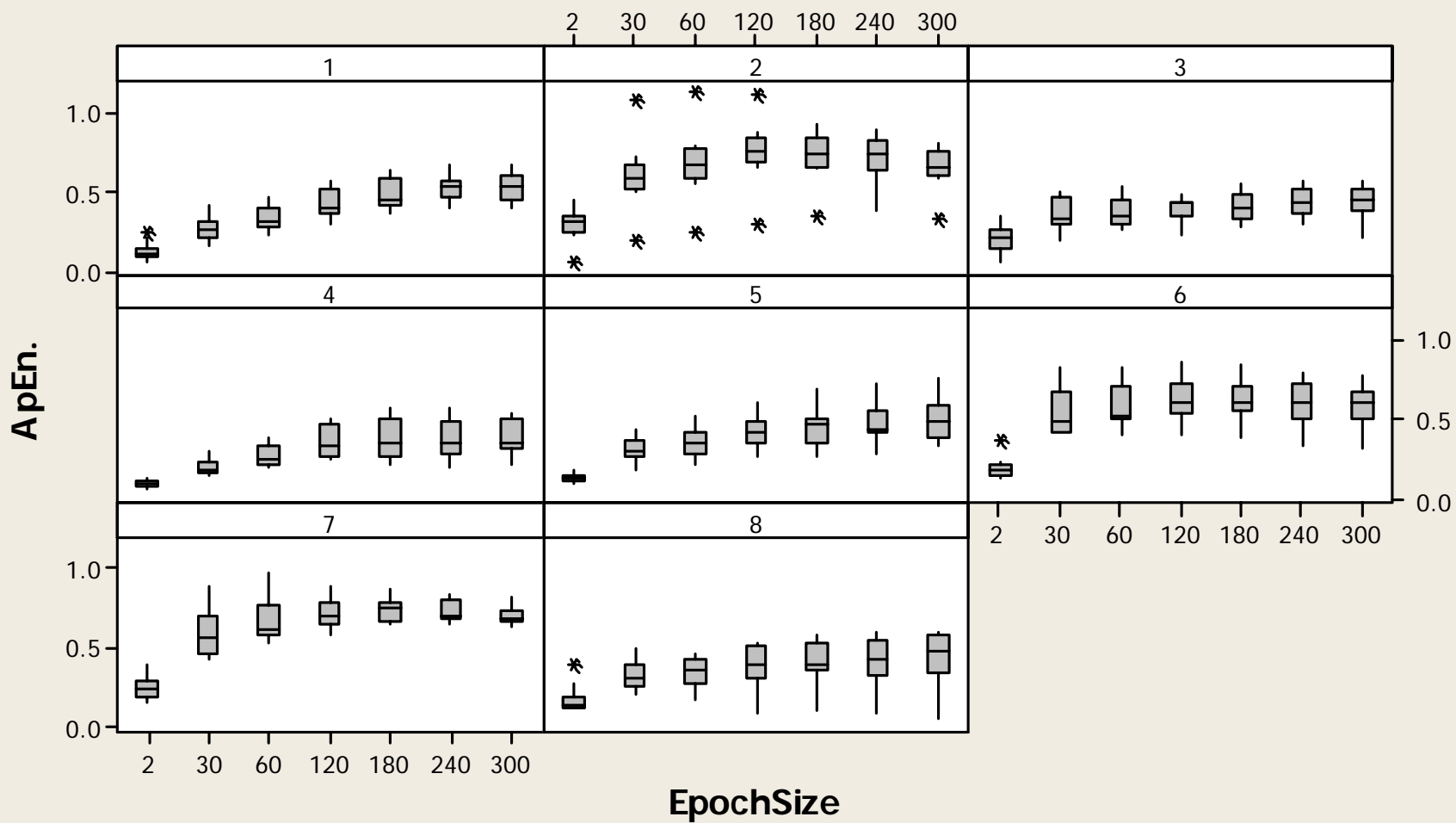
For epoch sizes 2 minutes or less, day 11 has more entropy than day 12. But for epochs larger than 2 minutes, day 12 has greater entropy. Which is right?

## Scatterplot of ApEn. vs EpochSize



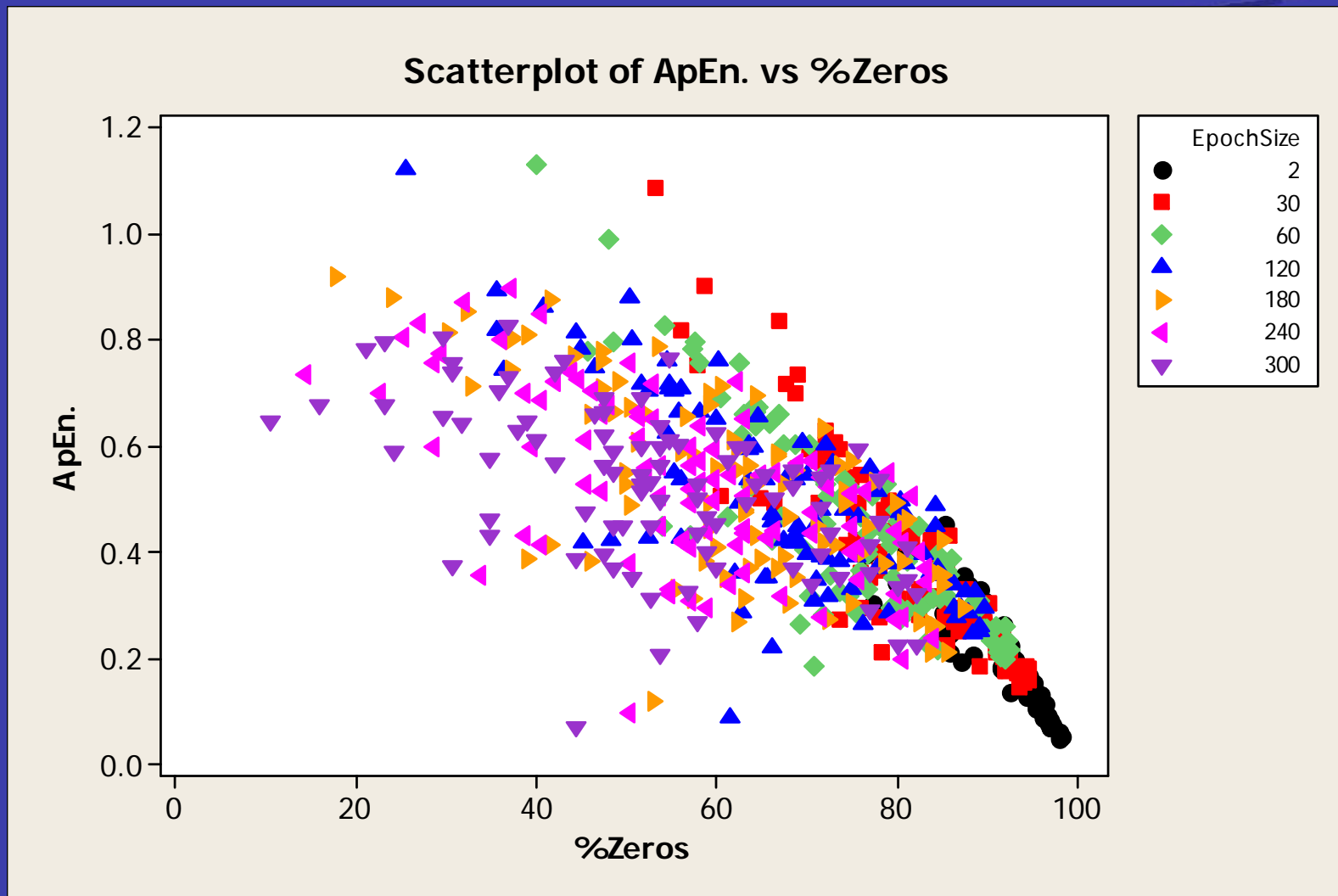
- Consistent for most days and subjects
- Is ApEn too sensitive to changes in Epoch Size
- Are there inherent properties of the mobility that determine the optimal epoch size?

### Boxplot of ApEn. vs EpochSize

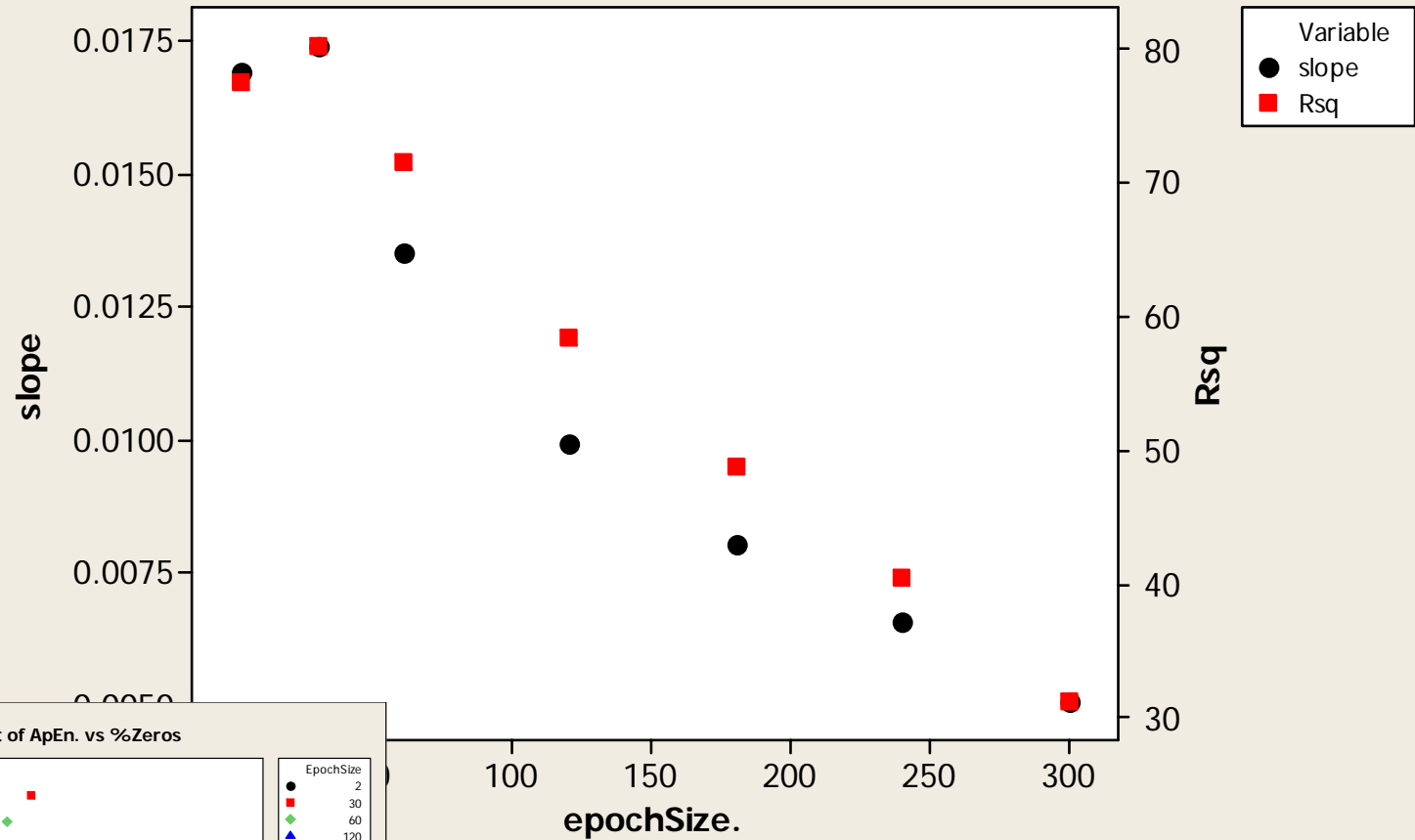


Panel variable: SubjCtr.

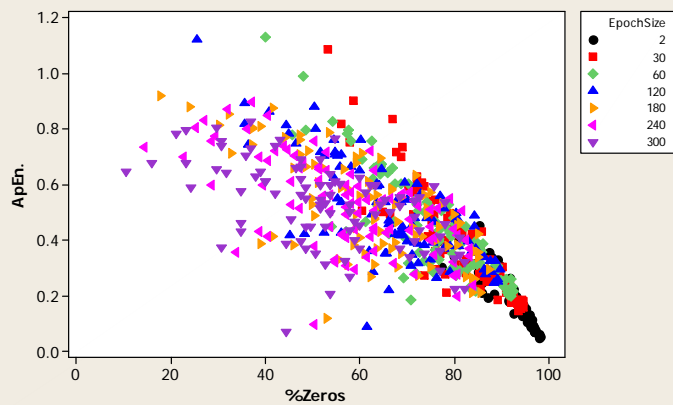
# The influence of zero-count epochs on ApEn



Scatterplot of slope, Rsq vs epochSize.

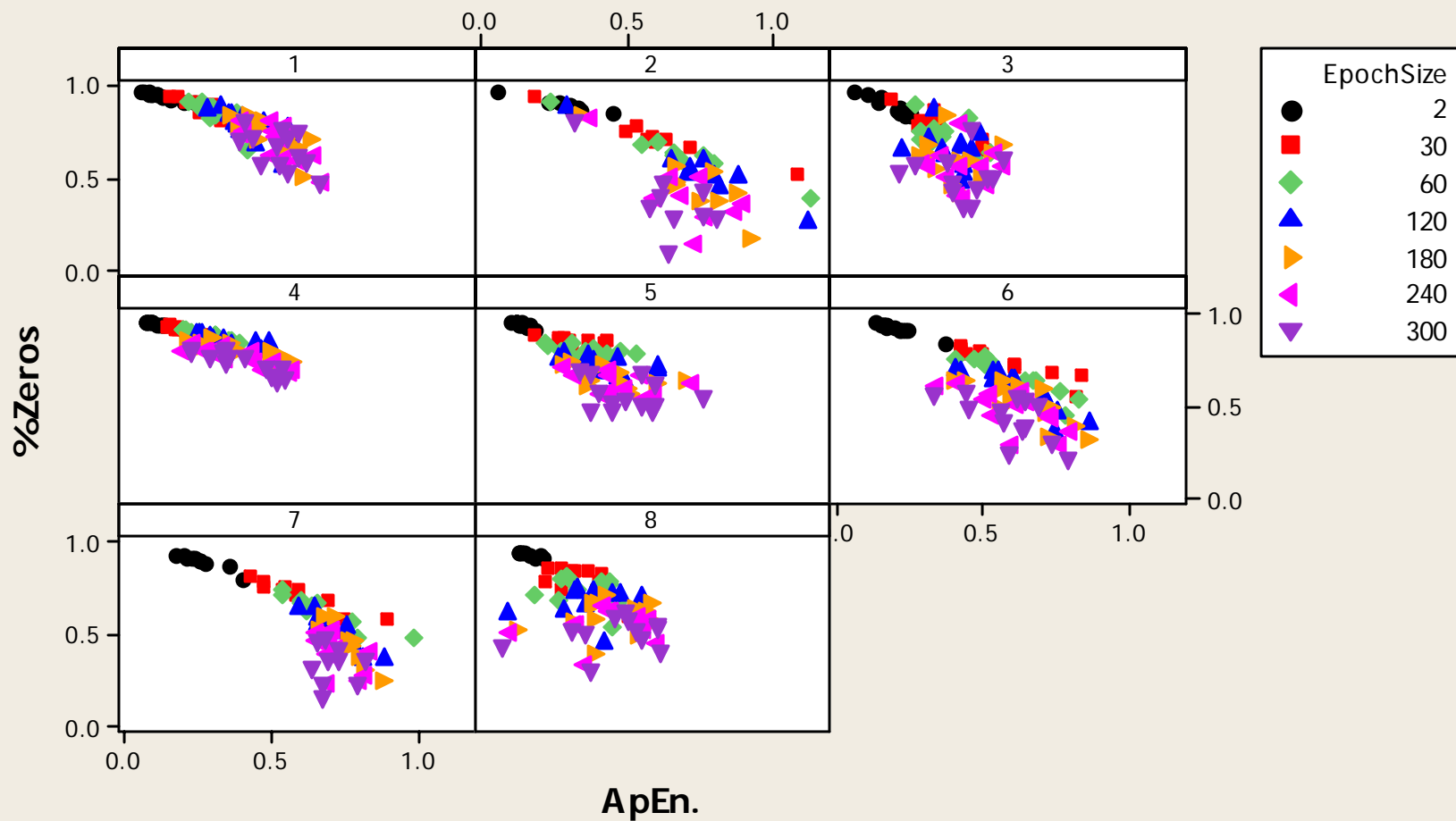


Scatterplot of ApEn. vs %Zeros



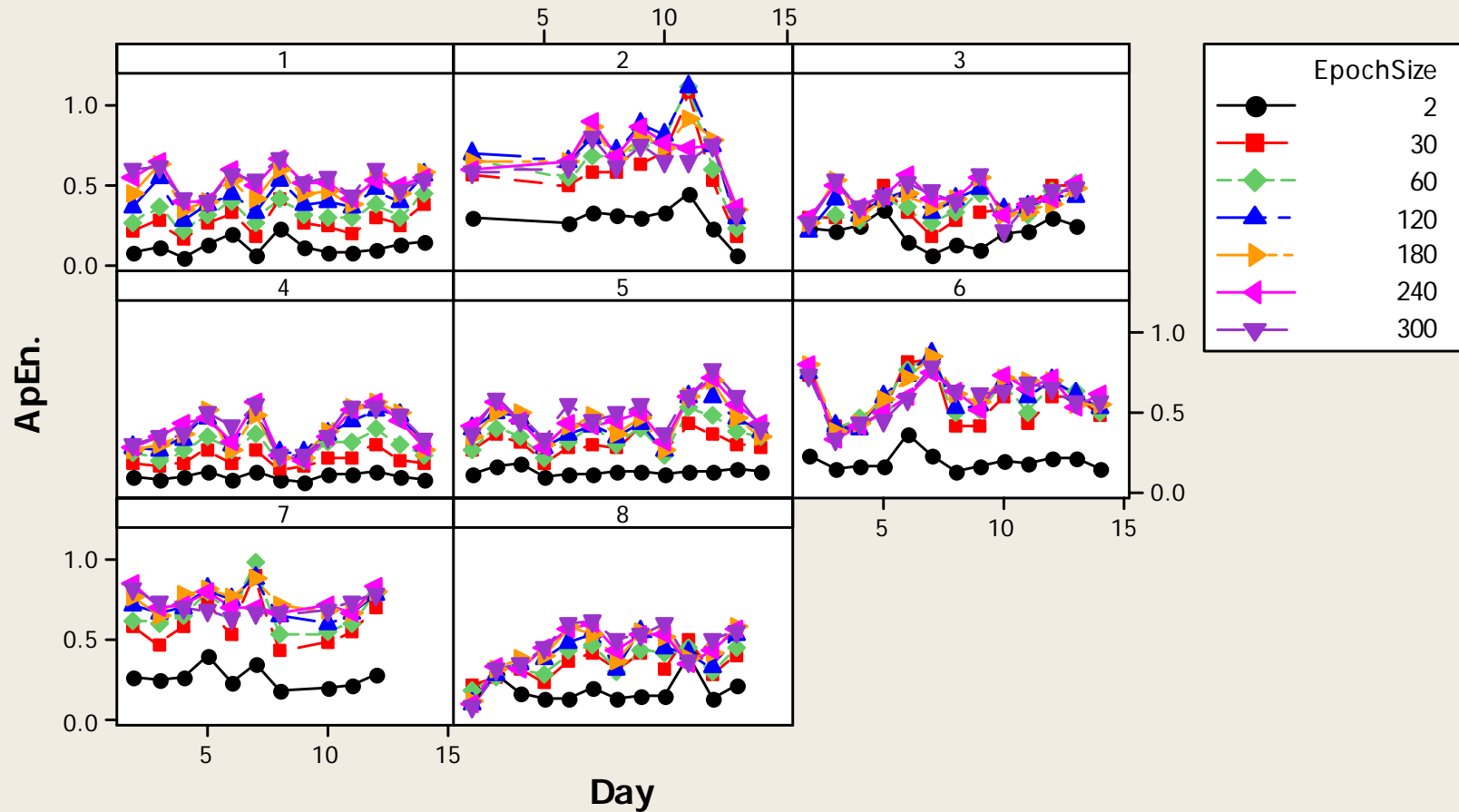
Regressions of ApEn on % Zero-Count Epochs for different Epoch Sizes

### Scatterplot of %Zeros vs ApEn.



Panel variable: SubjCtr.

### Scatterplot of ApEn. vs Day



Panel variable: SubjCtr.

# Entropy Results

- One minute epochs



PRE



POST

	ST32		ST34	
	Mean	Stdev	Mean	Stdev
Pre	0.619	0.222	0.364	0.083
Post	0.647	0.183	0.365	0.105

No change in ApEn with new wheelchair!

# Future Direction

- Decide if ApEn can be used to describe mobility
- Select the optimal epoch size to analyze
- Identify “healthy” complexity by relating entropy to health and quality of life measures



# Selected References

- Pincus SM. Proc Natl Acad Sci U S A. 1991 Mar 15;88(6):2297-301. Approximate entropy as a measure of system complexity.
- Innovative Analyses of Human Movement, Nicholas Stergiou editor, 2004
- Goldberger AL, et. al. Proc Natl Acad Sci U S A. 2002 Feb 19;99 Suppl 1:2466-72. Fractal dynamics in physiology: alterations with disease and aging.
- Pincus SM. Ann N Y Acad Sci. 2001 Dec;954:245-67. Assessing serial irregularity and its implications for health.

## Examples Cited

- Buzzi UH, Ulrich BD. Motor Control. 2004 Jul;8(3):241-54. Dynamic stability of gait cycles as a function of speed and system constraints.
- Laidre KL, et. al. Zoology (Jena). 2004;107(1):3-11. Fractal analysis of narwhal space use patterns.
- Su NY, Puche H. J Econ Entomol. 2003 Feb;96(1):88-93. Tunneling activity of subterranean termites (Isoptera: Rhinotermitidae) in sand with moisture gradients.



# Acknowledgements

- Ideas and Discussion
  - Dr. Jim Cavanaugh
  - Dr. Helen Heonig
  - Dr. William Del'Aune
  - Dr. Fran Harris
  - Dr. Stephen Sprigle
  - Dr. Jeffrey Hausdorff
  - Dr. Young-Hui Chang and Applied Physiology 6232 class
- Funding Sources:
  - NSF GFRP
  - NIDRR - RERC Wheeled Mobility
- Instrumentation & Data Collection
  - Chris Maurer
  - Adrienne Davis
  - Shawn Lankton
  - Michelle Krueger
- Code
  - PhysioBank, PhysioToolkit, and PhysioNet
  - Jim Cavanaugh



Questions?

